

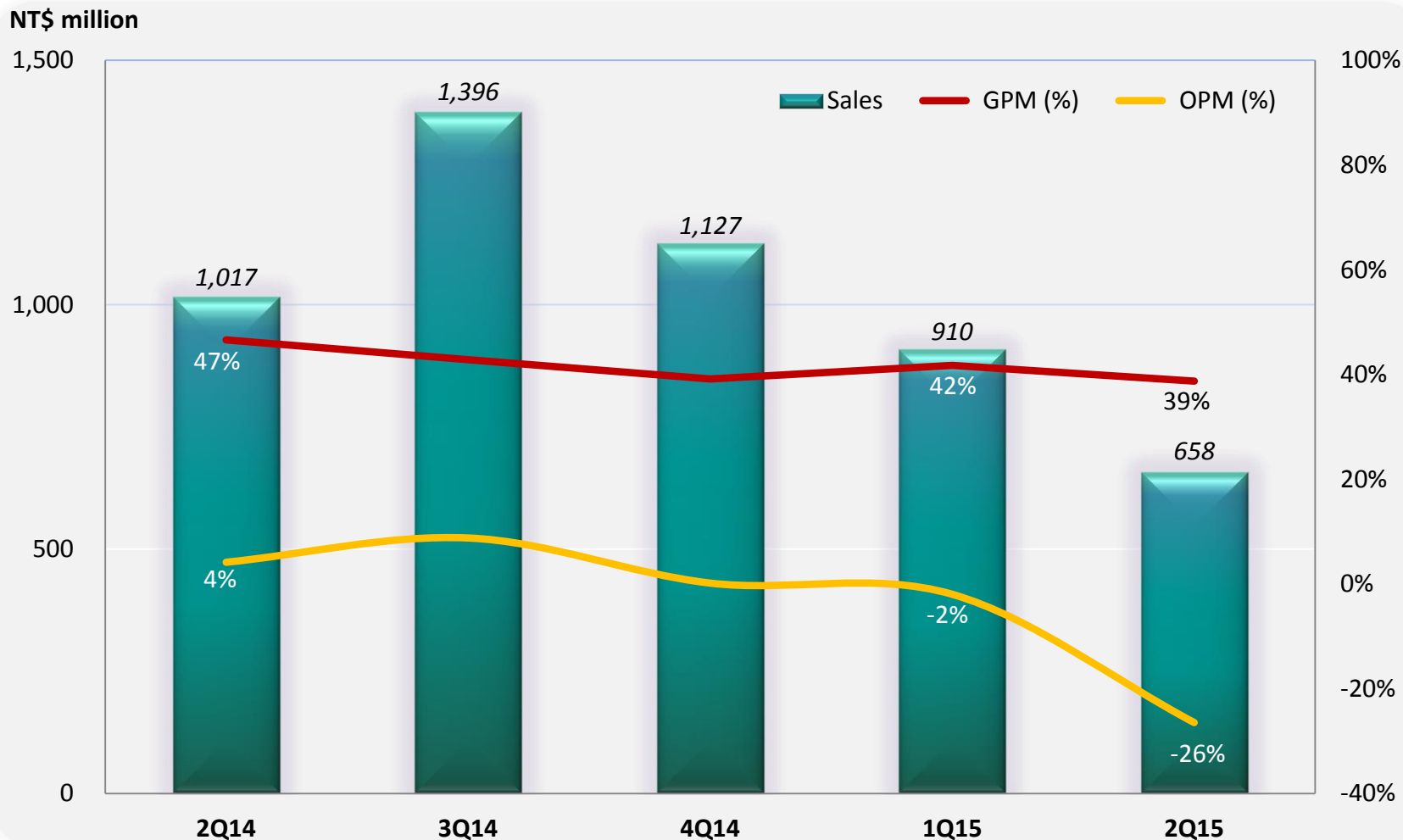
# **ALi Corporation (3041 TT)**

## **2Q15 Investor Conference**

Jul 30<sup>th</sup>, 2015

# 2Q15 Consolidated Quarterly Results

- 2Q15 revenue reached NT\$658 million, QoQ -28%, YoY -35%
- Gross profit margin was 39%
- Operating profit margin was -26%



# 2Q15 Consolidated Income Statement

(Amounts in thousand New Taiwan Dollars except Earnings Per Share)

	2Q15		1Q15		2Q14		QoQ	YoY
<b>Net sales</b>	658,485	100%	909,890	100%	1,016,890	100%	-28%	-35%
Cost of goods sold	(403,323)		(530,090)		(542,663)		-24%	-26%
<b>Gross profits</b>	255,162	39%	379,800	42%	474,227	47%	-33%	-46%
Operating expenses:								
Selling expenses	(60,269)		(65,640)		(80,635)		-8%	-25%
Administrative expenses	(76,032)		(71,040)		(73,340)		7%	4%
Research and development expenses	(286,553)		(260,953)		(278,005)		10%	3%
Total operating expenses	(422,854)		(397,633)		(431,980)		6%	-2%
<b>Operating income</b>	(167,692)	-26%	(17,833)	-2%	42,247	4%	840%	n/a
Non-operating income and gain (expense & loss)	11,088		23,393		6,343		-53%	75%
<b>Income before income tax</b>	(156,604)		5,560		48,590		n/a	n/a
Income tax (expense) benefit	21,197		(4,937)		(14,910)		n/a	n/a
<b>Net income</b>	(135,407)		623		33,680		n/a	n/a
Earnings Per Share (in New Taiwan Dollars)	(0.46)		0.00		0.12			

# 2Q15 Consolidated Balance Sheet

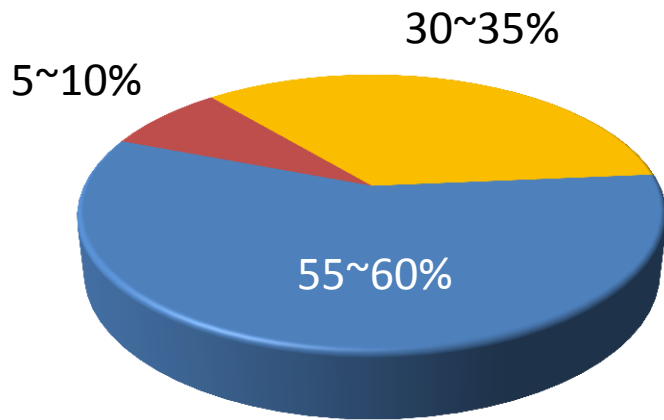
(Amounts in thousand New Taiwan Dollars except Key Indices)

## Selected Items from Balance Sheet

	Jun 30, 2015	Mar 31, 2015	Jun 30, 2014
Cash, cash equivalents and investments in marketable financial instruments	3,897,168	4,168,924	4,740,220
Notes and accounts receivable	155,076	171,856	193,296
Inventory (net)	500,135	486,091	560,753
Other current assets	390,810	431,098	332,856
<b>Total current assets</b>	<b>4,943,189</b>	<b>5,257,969</b>	<b>5,827,125</b>
Long-term Investments	101,529	101,174	64,963
Net PP&E	682,371	682,418	691,939
Intangible assets	496,491	522,282	502,118
Other assets	176,054	157,249	127,657
<b>Total assets</b>	<b>6,399,634</b>	<b>6,721,092</b>	<b>7,213,802</b>
Notes and accounts payable	324,307	451,214	484,040
Other current liabilities	599,533	442,590	1,160,158
Non-current liabilities	31,719	34,202	20,352
<b>Total liabilities</b>	<b>955,559</b>	<b>928,006</b>	<b>1,664,550</b>
<b>Total shareholders' equity</b>	<b>5,444,075</b>	<b>5,793,086</b>	<b>5,549,252</b>
<b>Key Indices</b>			
A/R Turnover Days (net)	23	17	19
Inventory Turnover Days (net)	111	85	83
Current Ratio	5.4	5.9	3.5

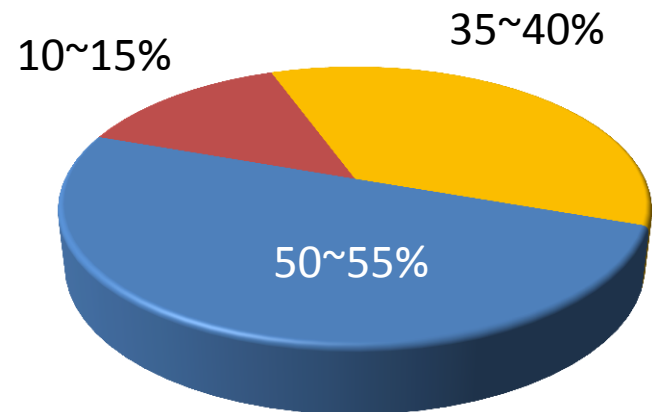
# Revenue Breakdown

1Q15



■ Pay-TV Operator STB ■ Retail STB ■ Others (Non-STB)

2Q15



■ Pay-TV Operator STB ■ Retail STB ■ Others (Non-STB)

# Thank you!

