

# **ALi Corporation (3041 TT)**

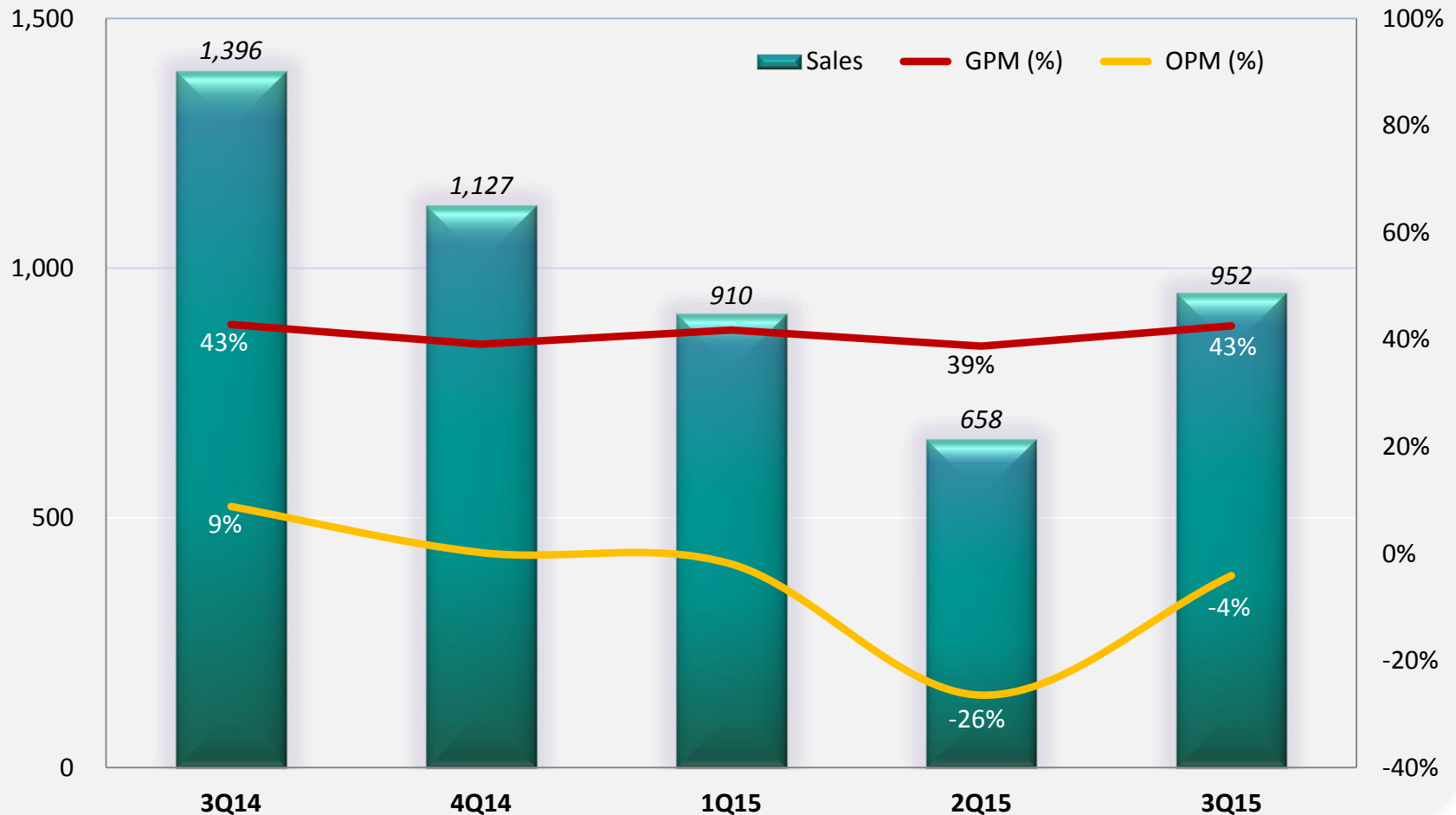
## **3Q15 Investor Conference**

Nov 12<sup>th</sup>, 2015

# 3Q15 Consolidated Quarterly Results

- 3Q15 revenue reached NT\$952 million, QoQ +45%, YoY -32%
- Gross profit margin was 43%
- Operating profit margin was -4%

NT\$ million



# 3Q15 Consolidated Income Statement

(Amounts in thousand New Taiwan Dollars except Earnings Per Share)

	3Q15		2Q15		3Q14		QoQ	YoY
<b>Net sales</b>	952,310	100%	658,485	100%	1,395,830	100%	45%	-32%
Cost of goods sold	(547,225)		(403,323)		(798,154)		36%	-31%
<b>Gross profits</b>	405,085	43%	255,162	39%	597,676	43%	59%	-32%
Operating expenses:								
Selling expenses	(73,794)		(60,269)		(104,663)		22%	-29%
Administrative expenses	(66,866)		(76,032)		(78,543)		-12%	-15%
Research and development expenses	(303,392)		(286,553)		(291,762)		6%	4%
Total operating expenses	(444,052)		(422,854)		(474,968)		5%	-7%
<b>Operating income</b>	(38,967)	-4%	(167,692)	-26%	122,708	9%	-77%	n/a
Non-operating income and gain (expense & loss)	73,336		11,088		11,432		561%	541%
<b>Income before income tax</b>	34,369		(156,604)		134,140		n/a	-74%
Income tax (expense) benefit	(3,324)		21,197		(21,890)		n/a	-85%
<b>Net income</b>	31,045		(135,407)		112,250		n/a	-72%
Earnings Per Share (in New Taiwan Dollars)	0.11		(0.46)		0.38			

# 3Q15 Consolidated Balance Sheet

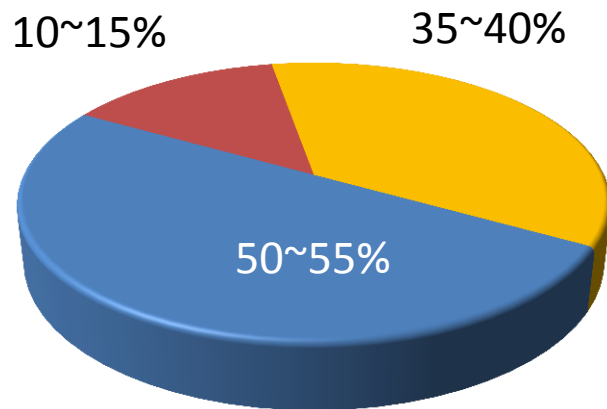
(Amounts in thousand New Taiwan Dollars except Key Indices)

## Selected Items from Balance Sheet

	Sep 30, 2015	Jun 30, 2015	Sep 30, 2014
Cash, cash equivalents and investments in marketable financial instruments	3,804,418	3,897,168	4,012,647
Notes and accounts receivable	224,347	155,076	284,069
Inventory (net)	362,042	500,135	509,343
Other current assets	436,879	390,810	644,616
<b>Total current assets</b>	<b>4,827,686</b>	<b>4,943,189</b>	<b>5,450,675</b>
Long-term Investments	92,903	101,529	48,070
Net PP&E	682,020	682,371	685,093
Intangible assets	475,685	496,491	477,099
Other assets	177,861	176,054	152,009
<b>Total assets</b>	<b>6,256,155</b>	<b>6,399,634</b>	<b>6,812,946</b>
Notes and accounts payable	345,868	324,307	604,935
Other current liabilities	403,266	599,533	470,331
Non-current liabilities	37,907	31,719	35,734
<b>Total liabilities</b>	<b>787,041</b>	<b>955,559</b>	<b>1,111,000</b>
<b>Total shareholders' equity</b>	<b>5,469,114</b>	<b>5,444,075</b>	<b>5,701,946</b>
<b>Key Indices</b>			
A/R Turnover Days (net)	18	23	16
Inventory Turnover Days (net)	72	111	62
Current Ratio	6.4	5.4	5.1

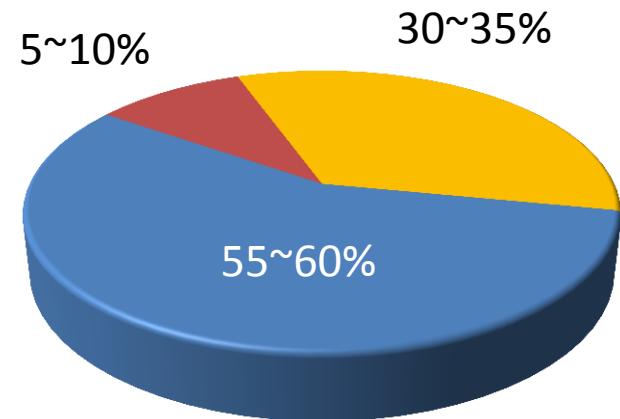
# Revenue Breakdown

2Q15



■ Pay-TV Operator STB ■ Retail STB ■ Others (Non-STB)

3Q15



■ Pay-TV Operator STB ■ Retail STB ■ Others (Non-STB)

# Thank you!

