

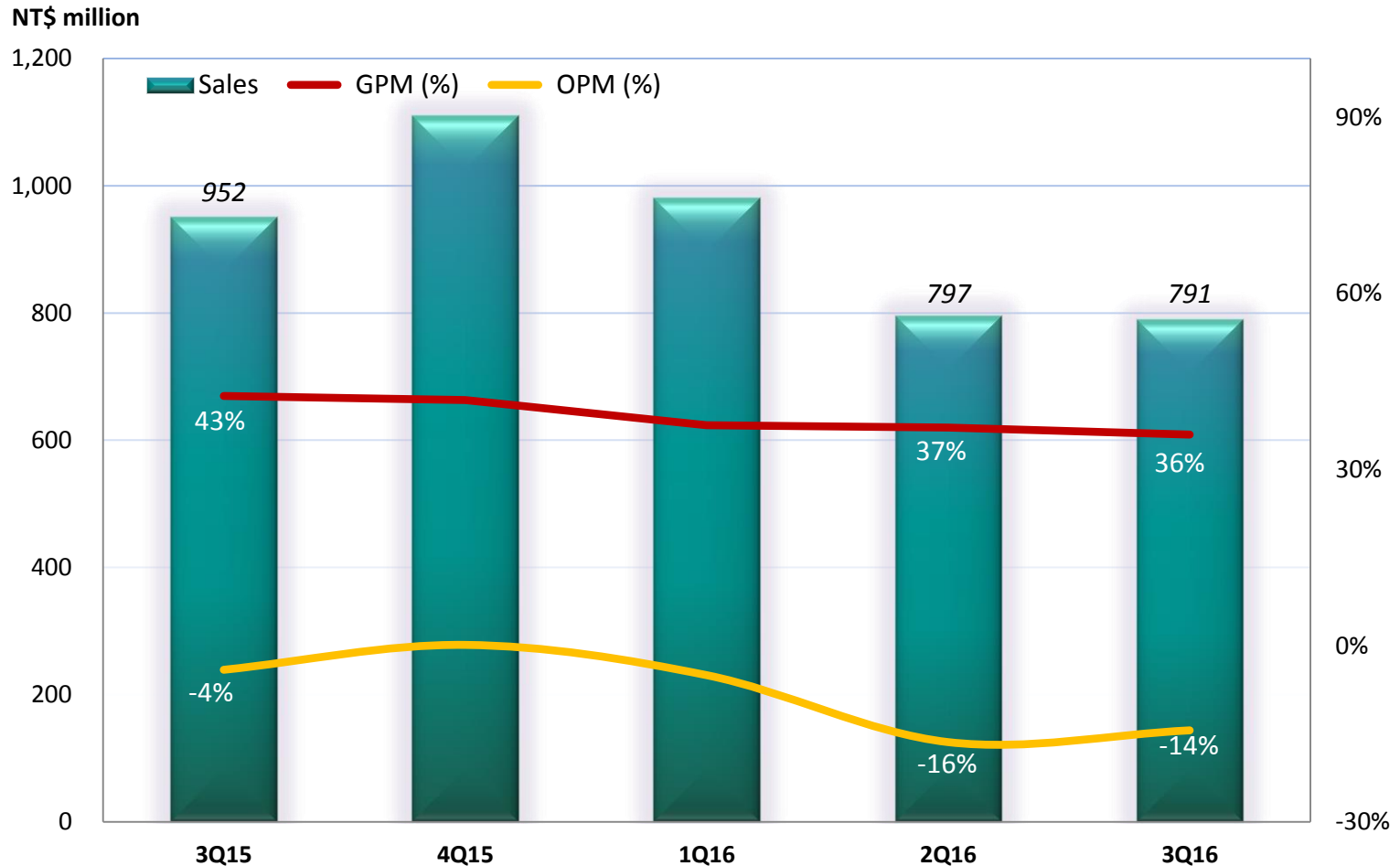
ALi Corporation (3041 TT) 3Q16 Investor Conference

Nov 11th, 2016



3Q16 Consolidated Quarterly Results

- 3Q16 revenue reached NT\$791 million, QoQ -1%, YoY-17 %
- Gross profit margin was 36%
- Operating profit margin was -14%



3Q16 Consolidated Income Statement

(Amounts in thousand New Taiwan Dollars except Earnings Per Share)

	3Q16	2Q16	3Q15	QoQ	YoY
Net sales	790,877 100%	796,637 100%	952,310 100%	-1%	-17%
Cost of goods sold	(506,611)	(500,846)	(547,225)	1%	-7%
Gross profits	284,266 36%	295,791 37%	405,085 43%	-4%	-30%
Operating expenses:					
Selling expenses	(58,266)	(67,483)	(73,794)	-14%	-21%
Administrative expenses	(64,537)	(60,767)	(66,866)	6%	-3%
Research and development expenses	(275,602)	(298,239)	(303,392)	-8%	-9%
Total operating expenses	(398,405)	(426,489)	(444,052)	-7%	-10%
Operating income	(114,139) -14%	(130,698) -16%	(38,967) -4%	-13%	193%
Non-operating income and gain (expense & loss)	10,637	21,751	73,336	-51%	-85%
Income before income tax	(103,502)	(108,947)	34,369	-5%	n/a
Income tax (expense) benefit	20,337	16,126	(3,324)	26%	n/a
Net income	(83,165)	(92,821)	31,045	-10%	n/a
Earnings Per Share (in New Taiwan Dollars)	(0.28)	(0.31)	0.11		



3Q16 Consolidated Balance Sheet

(Amounts in thousand New Taiwan Dollars except Key Indices)

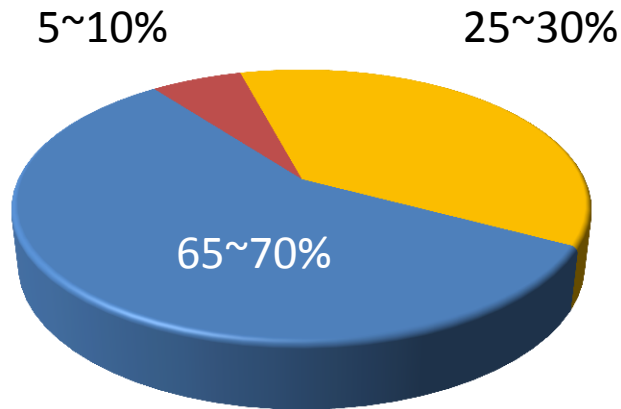
Selected Items from Balance Sheet

	Sep 30, 2016	Jun 30, 2016	Sep 30, 2015
Cash, cash equivalents and investments in marketable financial instruments	3,575,810	3,639,989	3,804,418
Notes and accounts receivable	196,525	187,092	224,347
Inventory (net)	597,177	600,965	362,042
Other current assets	274,948	375,299	436,879
Total current assets	4,644,460	4,803,345	4,827,686
Long-term Investments	61,154	63,763	92,903
Net PP&E	652,324	663,747	682,020
Intangible assets	514,413	421,869	475,685
Other assets	214,788	193,432	177,861
Total assets	6,087,139	6,146,156	6,256,155
Notes and accounts payable	410,313	388,943	345,868
Other current liabilities	392,977	324,306	403,266
Non-current liabilities	21,275	25,308	37,907
Total liabilities	824,565	738,557	787,041
Total shareholders' equity	5262574	5,407,599	5,469,114
Key Indices			
A/R Turnover Days (net)	22	23	18
Inventory Turnover Days (net)	109	110	72
Current Ratio	5.8	6.7	6.4



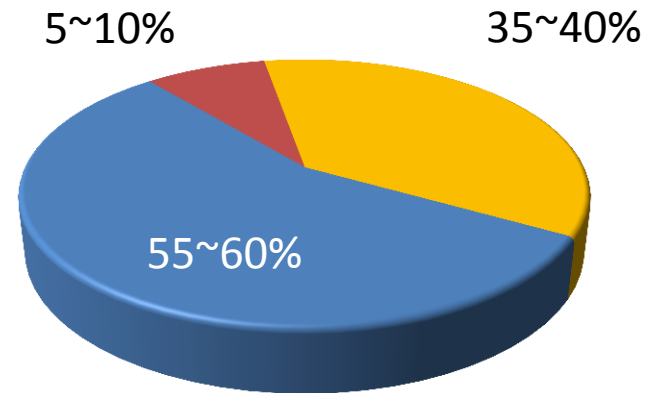
Quarterly Revenue Breakdown

2Q16



■ Pay-TV Operator STB ■ Retail STB ■ Others (Non-STB)

3Q16



■ Pay-TV Operator STB ■ Retail STB ■ Others (Non-STB)



Thank you!



ALi®

