

# ALi Corporation (3041 TT) 1Q16 Investor Conference

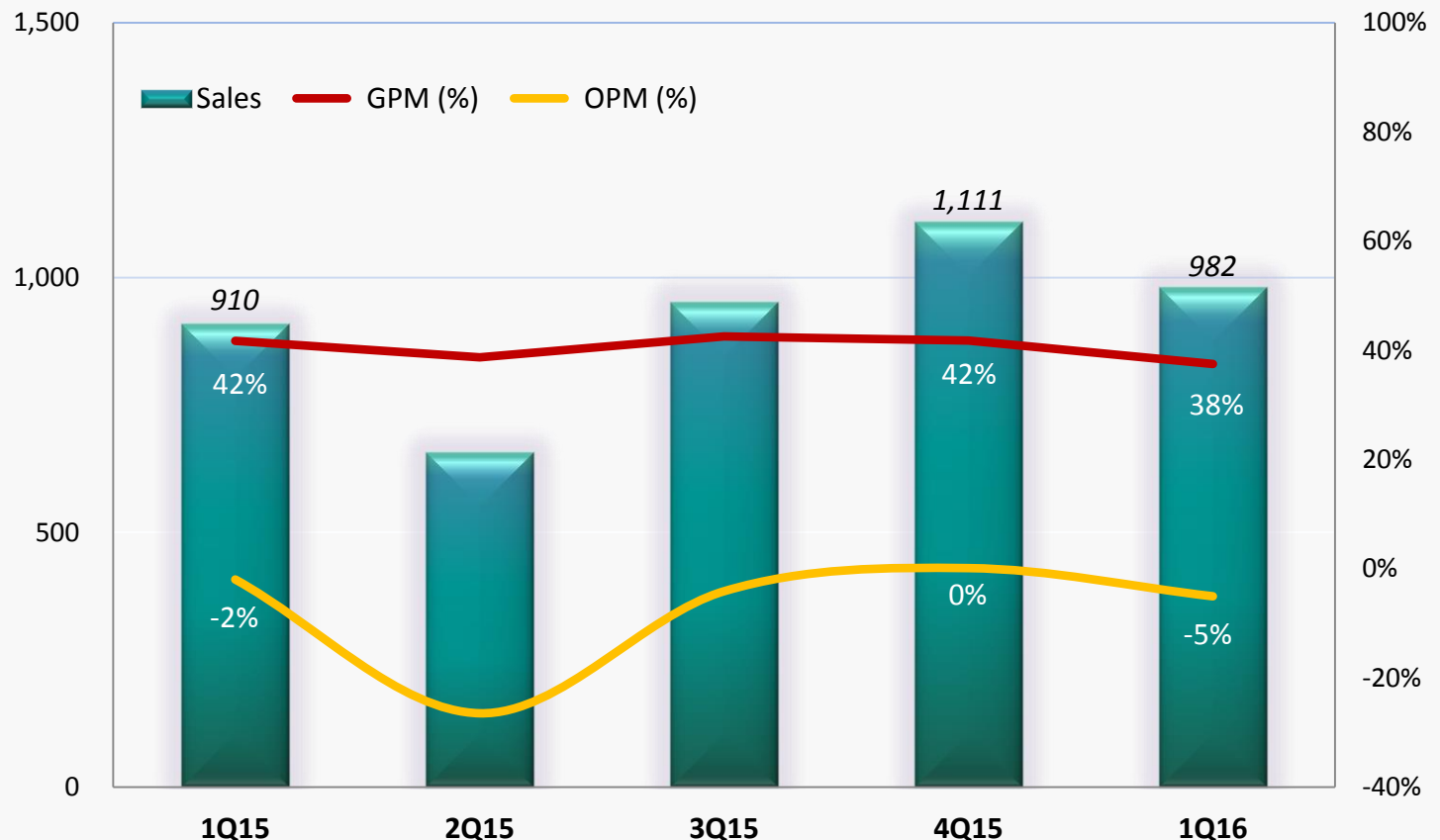
*May 13<sup>th</sup>, 2016*



# 1Q16 Consolidated Quarterly Results

- 1Q16 revenue reached NT\$982 million, QoQ -12%, YoY +8%
- Gross profit margin was 38%
- Operating profit margin was -5%

NT\$ million



# 1Q16 Consolidated Income Statement

(Amounts in thousand New Taiwan Dollars except Earnings Per Share)

	1Q16		4Q15		1Q15		QoQ	YoY
<b>Net sales</b>	981,736	100%	1,110,908	100%	909,890	100%	-12%	8%
Cost of goods sold	(613,240)		(646,306)		(530,090)		-5%	16%
<b>Gross profits</b>	368,496	38%	464,602	42%	379,800	42%	-21%	-3%
Operating expenses:								
Selling expenses	(70,953)		(74,961)		(65,640)		-5%	8%
Administrative expenses	(64,998)		(80,371)		(71,040)		-19%	-9%
Research and development expenses	(281,995)		(307,904)		(260,953)		-8%	8%
Total operating expenses	(417,946)		(463,236)		(397,633)		-10%	5%
<b>Operating income</b>	(49,450)	-5%	1,366	0%	(17,833)	-2%	n/a	177%
Non-operating income and gain (expense & loss)	19,046		24,965		23,393		-24%	-19%
<b>Income before income tax</b>	(30,404)		26,331		5,560		n/a	n/a
Income tax (expense) benefit	4,529		(8,500)		(4,937)		n/a	n/a
<b>Net income</b>	(25,875)		17,831		623		n/a	n/a
Earnings Per Share (in New Taiwan Dollars)	(0.09)		0.06		0.00			



# 1Q16 Consolidated Balance Sheet

(Amounts in thousand New Taiwan Dollars except Key Indices)

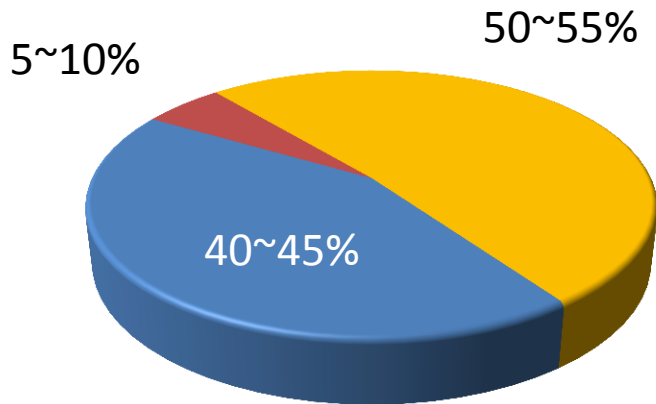
## Selected Items from Balance Sheet

	Mar 31, 2016	Dec 31, 2015	Mar 31, 2015
Cash, cash equivalents and investments in marketable financial instruments	3,843,208	3,985,236	4,168,924
Notes and accounts receivable	218,925	262,039	171,856
Inventory (net)	611,199	448,137	486,091
Other current assets	301,505	476,288	431,098
<b>Total current assets</b>	<b>4,974,837</b>	<b>5,171,700</b>	<b>5,257,969</b>
Long-term Investments	90,010	114,523	101,174
Net PP&E	667,691	676,787	682,418
Intangible assets	450,693	446,852	522,282
Other assets	175,235	172,199	157,249
<b>Total assets</b>	<b>6,358,466</b>	<b>6,582,061</b>	<b>6,721,092</b>
Notes and accounts payable	525,708	633,629	451,214
Other current liabilities	303,415	400,366	442,590
Non-current liabilities	30,858	30,148	34,202
<b>Total liabilities</b>	<b>859,981</b>	<b>1,064,143</b>	<b>928,006</b>
<b>Total shareholders' equity</b>	<b>5,498,485</b>	<b>5,517,918</b>	<b>5,793,086</b>
<b>Key Indices</b>			
A/R Turnover Days (net)	22	20	17
Inventory Turnover Days (net)	79	58	85
Current Ratio	6.0	5.0	5.9



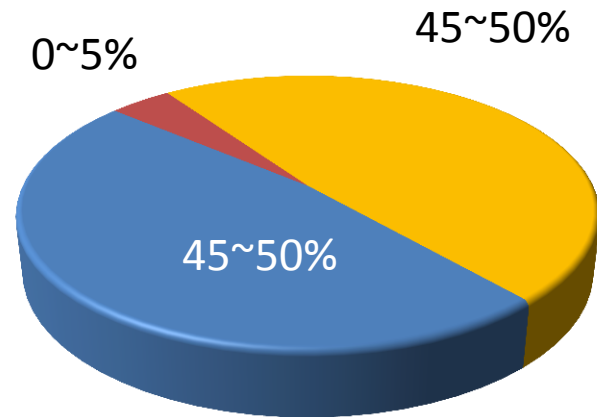
# Quarterly Revenue Breakdown

4Q15



■ Pay-TV Operator STB ■ Retail STB ■ Others (Non-STB)

1Q16



■ Pay-TV Operator STB ■ Retail STB ■ Others (Non-STB)



Thank you!



ALi®

